

INSIGHT OPTICAM 200

DEPENDABLE SEWER INSPECTION PUSH CAMERA

QUOTE

Quotation For		
Qty.	Product	Price
1	OPTICAM 200FT.	
Total		

Customer Contact	
Name:	
Address:	
Phone:	

Sales Contact	

PRODUCT OVERVIEW

The Opticam 2017 system has fully-loaded features to assist users with sewer inspections. The user-friendly keypad has been redesigned with an easy "On Demand" recording and snapshot button to help speed up inspection time. Technicians can easily record vital inspection data and client information using the available on-screen text-writer and footage counter. Built with a 1.3" modular, self-leveling camera head that is geared to inspect sewer pipes from 3" up to 12" inch diameter and a built-in sonde which broadcasts a 512 Hz frequency which is locatable with a 512 Hz locator.



FEATURES AND BENEFITS

NEW MOBILE PHONE APP

Download Insight Vision App to an Android™ or Apple™ phone.



Wi-Fi Video Streaming App

View, record, snapshot and share inspection videos.



One-Touch Recording and Snapshot

Record and take pictures during an inspection.



Keypad and On-Screen Text Enable

Type in vital information to display and record on video.



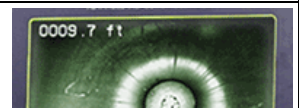
Built-in Microphone and Speaker

Record voiceover video and play it back.



On-Screen Footage Counter

View the distance pushed and display on screen.



Built-in 512 Hz Frequency Sonde

Broadcast a 512hz signal to be locatable with a 512hz locator.



Optional External Battery Power Back

Power up the system for up to 6 hours on a full charge.



QUICK CHANGE MODULAR CAMERA

- 1.3" Diameter Camera Head
- Quick Camera Head Repair
- Clear Resolution Video
- Clearview Gorilla Glass
- Durable Stainless Steel Body
- Self-Leveling Camera Head









INSIGHT OPTICAM 200

DEPENDABLE SEWER INSPECTION PUSH CAMERA



<p>CONTROL SYSTEM</p>		<p>Case Dimensions: 12"L x 9"W x 11"H Video Resolution: 640 x 480 Data Storage: 8GB USB stick * Included with the system Keyboard: Full "QWERTY" style membrane Recording format: H.264 Image Capture: JPG Text Generator: Yes Distance Counter: Displays on screen FT/M Video Out: No Controls: One Touch Recording Power Source: 12V 5Amp DC * Included with the system LCD Size: 10.4" Weight: 8 lbs. Battery: External Lithium-ion * Optional Add-on</p>	
<p>CAMERA HEAD</p>		<p>Self-Leveling: Yes Dimensions: 2" L x 1.3" Diameter Camera Resolution: 640 x 480 Weight: 5.9 Ounces Light Ring: 12 LED Imager Sensitivity: .025 Lux Image Size/ Type: 1/4" CMOS Construction: Stainless Steel Body LED Window: Polycarbonate Camera Window: Gorilla Glass</p>	
<p>PUSH ROD/ FRAME</p>		<p>Cable Length: 200-300-400ft. Available. Pipe Size: 3" to 12" Cable Jacket: Polypropylene jacket Cable core: Spiral Wound Fiberglass push rod Push Rod Dia.: 0.475" OD Dimensions: 30"L x 16-1/2"W x 32-1/2"H Weight: 62 lbs. (200 ft.) Sonde Frequency: 512Hz Protective Skids: 2" & 3" * Included with the system</p>	
<p>MOBILE PHONE APP</p>		<p>Local Wi-Fi: Stream Wireless Video (No Internet Needed) Operating System: Android & ISO devices capable (Free Download) Controls: View, record, playback and snapshot File transfer: Upload to Email or YouTube Video Connection: Video Stream Up to 100ft. Image Format: JPG</p>	

• **QUALITY**

• **DEPENDABILITY**

• **SERVICABILITY**